

EXPLODED PARTS DIAGRAM

| MODEL | UNIT | FIG |
|-------|------------------|-----|
| BH2 | B2-CLS B2-HLH | 11 |

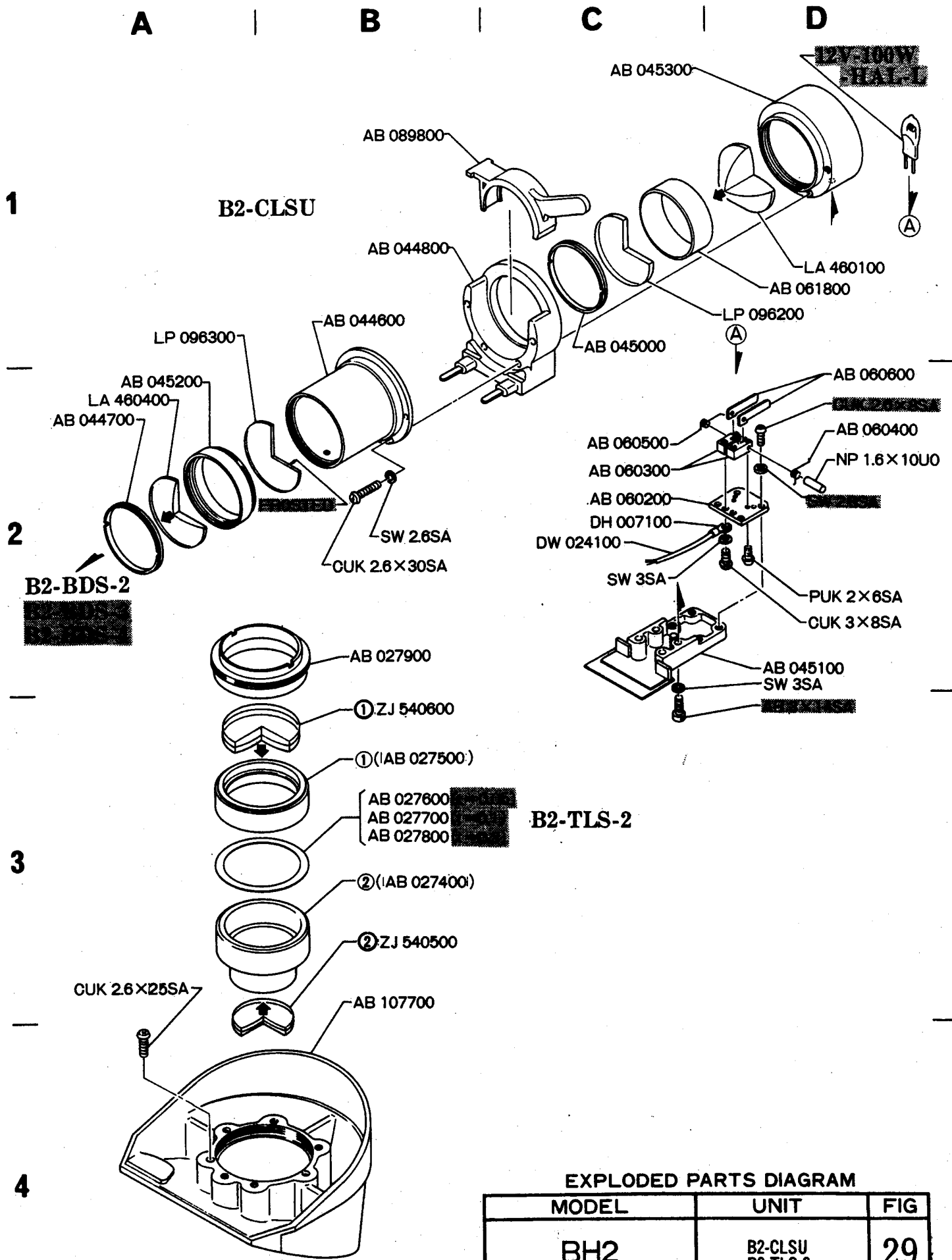
OLYMPUS OPTICAL CO., LTD. TOKYO, JAPAN

NOTE: WHEN ORDERING FOR SPARE PARTS, PLEASE CLARIFY A MODEL OR UNIT, PARTS NUMBER AND QUANTITY.



1130,1132

| PARTS NO. | NAME OF PARTS | | Q' ty | PARTS NO. | NAME OF PARTS | | Q' ty |
|--------------------|---------------|------------------|-------|---------------------------------------|---------------|---------------------------|-------|
| <u>B 2 - C L S</u> | | | | <u>B 2 - H L H, B 2 - H L H - U L</u> | | | |
| AB044600 | スリーブ | SLEEVE | 1 | AB043600 | ホントイ | LAMP HOUSING | 1 |
| 044700 | R | RING | 1 | 043700 | L フタ | COVER-L | 1 |
| 044800 | ツナギザ | CONNECTING MOUNT | 1 | 043800 | R フタ | COVER-R | 1 |
| 044900 | CLワク | LENS FRAME | 1 | 043900 | カザリイタ | LIGHT SEALED PLATE | 1 |
| 045000 | オサエカン | RING | 1 | 044000 | ウエイタ | UPPER PLATE | 1 |
| 045100 | フタ | COVER | 1 | 044100 | シタイタ | LOWER PLATE | 1 |
| 060200 | ゼツエンイタ | INSULATOR | 1 | 044200 | シャコウイタ | LIGHT SEALED PLATE | 1 |
| 060300 | セッテン | CONTACT | 2 | 044300 | ソコカバー | BOTTOM COVER | 1 |
| 060400 | バネ | SPRING | 1 | 046800 | メイハン | NAME PLATE (B2-HLH) | 1 |
| 060500 | バネ | SPRING | 1 | 810100 | ランプメイハン | NAME PLATE (B2-HLH-UL) | |
| 060600 | レバー | LEVER | 2 | ZA080300 | ジク | KNOB | 1 |
| 061600 | dp | SPACER | 1 | WE106069 | CSK3X8SA | SCREW | 8 |
| 061700 | dp | SPACER | 1 | WE163021 | CUTB3X5SA | SCREW | 8 |
| 089800 | ワク | FILTER FRAME | 1 | | | | |
| DH007100 | タンシ | TERMINAL | 2 | | | | |
| DW024100 | コード | CORD | 0.1m | | | | |
| LA460100 | レンズ | LENS | 1 | | | | |
| 460400 | レンズ | LENS | 1 | | | | |
| LP096200 | ロボンガラス | ADIABATIC GLASS | 1 | | | | |
| 096300 | フィルタ | FROSTED FILTER | 1 | | | | |
| WE402023 | AB3X14SA | SCREW | 4 | | | | |
| WE114033 | CUK2.6X8SA | SCREW | 4 | | | | |
| 114281 | CUK2.6X30SA | SCREW | 4 | | | | |
| 114168 | CUK3X8SA | SCREW | 2 | | | | |
| WE115308 | PUK2X6SA | SCREW | 2 | | | | |
| WE304010 | SW2.6SA | WASHER | 8 | | | | |
| 304020 | SW3SA | WASHER | 6 | | | | |
| WE601010 | NP1.6X10UO | PIN | 2 | | | | |



EXPLODED PARTS DIAGRAM

| MODEL | UNIT | FIG |
|-------|---------------------|-----|
| BH2 | B2-CLSU B2-TLS-2 | 29 |

OLYMPUS OPTICAL CO., LTD. TOKYO, JAPAN

NOTE: WHEN ORDERING FOR SPARE PARTS, PLEASE CLARIFY A MODEL OR UNIT, PARTS NUMBER AND QUANTITY.

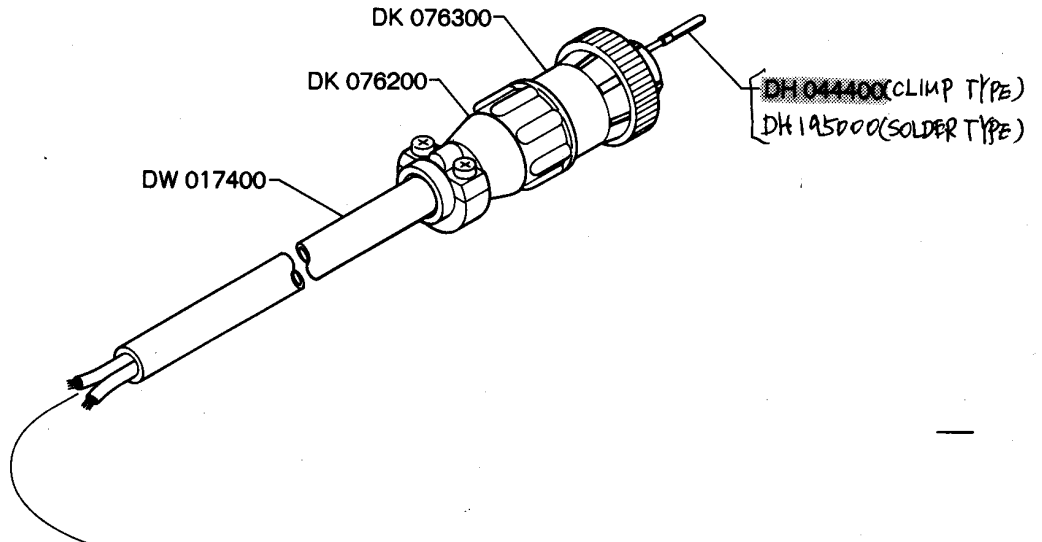


1131,1273

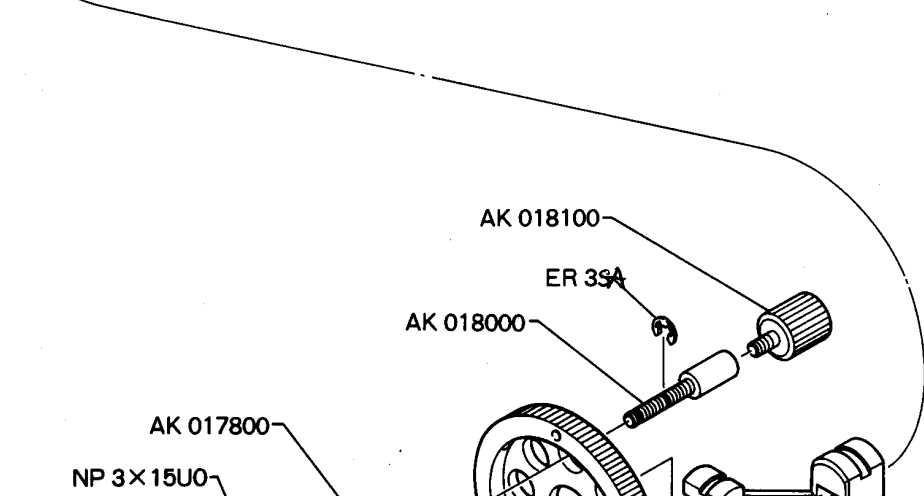
| PARTS NO. | NAME OF PARTS | | Q' ty | PARTS NO. | NAME OF PARTS | | Q' ty |
|----------------------|---------------|------------------|-------|------------------------|---------------|-----------------|----------|
| <u>B 2 - C L S U</u> | | | | <u>B 2 - T L S - 2</u> | | | |
| AB044600 | スリーブ | SLEEVE | 1 | AB027600 | W0.05 | WASHER (t=0.05) | } 0 ~ |
| 044700 | R | RING | 1 | 027700 | W0.1 | WASHER (t=0.1) | |
| 044800 | ツナギザ | CONNECTING MOUNT | 1 | 027800 | W0.3 | WASHER (t=0.3) | |
| 045000 | オサエカン | RING | 1 | 027900 | オサエカン | RING | 1 |
| 045100 | フタ | COVER | 1 | 107700 | ソトワクス | OUTER FRAME | 1 |
| 045200 | L ワク | LENS FRAME | 1 | | | | |
| 045300 | CLワク | LENS FRAME | 1 | ZJ540500 | レンズ | LENS | 1 |
| 060200 | ゼツエンイタ | INSULATOR | 1 | 540600 | レンズ | LENS | 1 |
| 060300 | セツテン | CONTACT | 2 | | | | |
| 060400 | バネ | SPRING | 1 | WE114010 | CUK2.6X25SA | SCREW | 4 |
| 060500 | バネ | SPRING | 1 | | | | |
| 060600 | レバー | LEVER | 2 | | | | |
| 061800 | dp | SPACER | 1 | | | | |
| 089800 | ワク | FILTER FRAME | 1 | | | | |
| DH007100 | タンシ | TERMINAL | 2 | | | | |
| DW024100 | コード | CORD | 0.1m | | | | |
| LA460100 | レンズ | LENS | 1 | | | | |
| 460400 | レンズ | LENS | 1 | | | | |
| LP096200 | ロボンガラス | ADIABATIC GLASS | 1 | | | | |
| 096300 | フィルタ | FROSTED FILTER | 1 | | | | |
| WE402023 | AB3X14SA | SCREW | 4 | | | | |
| WE114033 | CUK2.6X8SA | SCREW | 4 | | | | |
| 114281 | CUK2.6X30SA | SCREW | 4 | | | | |
| 114168 | CUK3X8SA | SCREW | 2 | | | | |
| WE115308 | PUK2X6SA | SCREW | 2 | | | | |
| WE304010 | SW2.6SA | WASHER | 8 | | | | |
| 304020 | SW3SA | WASHER | 6 | | | | |
| WE601010 | NP1.6X10UO | PIN | 2 | | | | |

A | B | C | D

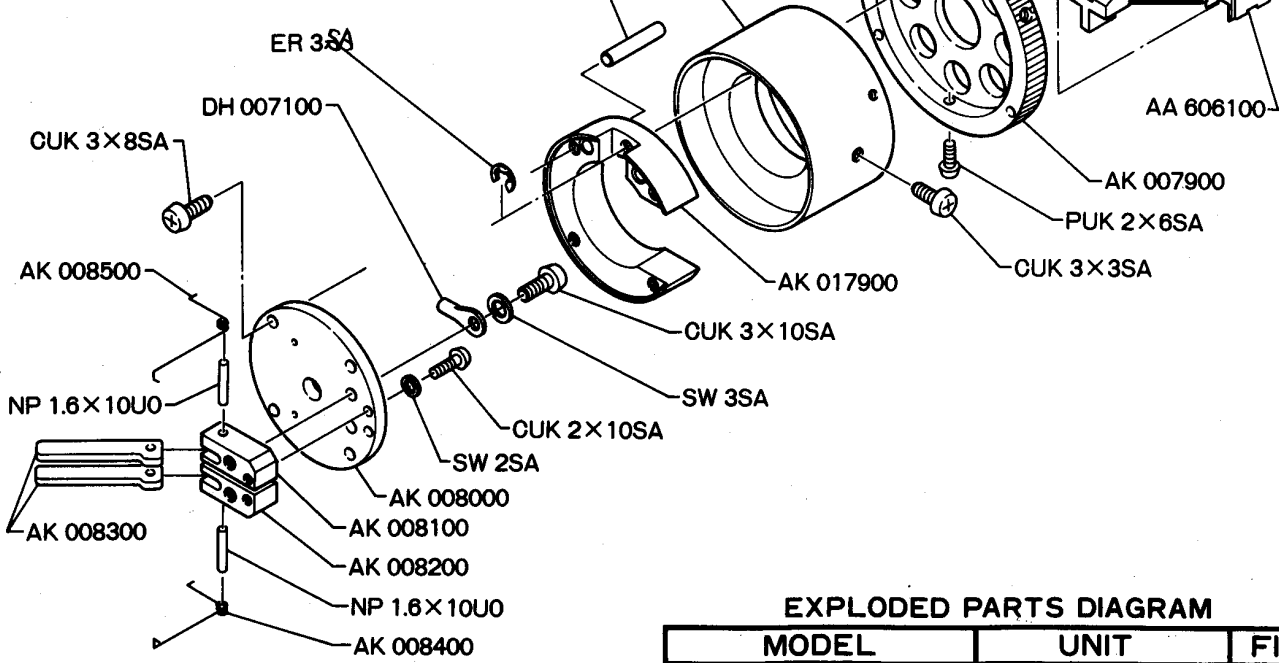
1



2



3



4

EXPLODED PARTS DIAGRAM

| MODEL | UNIT | FIG |
|-------|--------|-----|
| BH2 | B2-MLS | 45 |

OLYMPUS OPTICAL CO., LTD. TOKYO, JAPAN

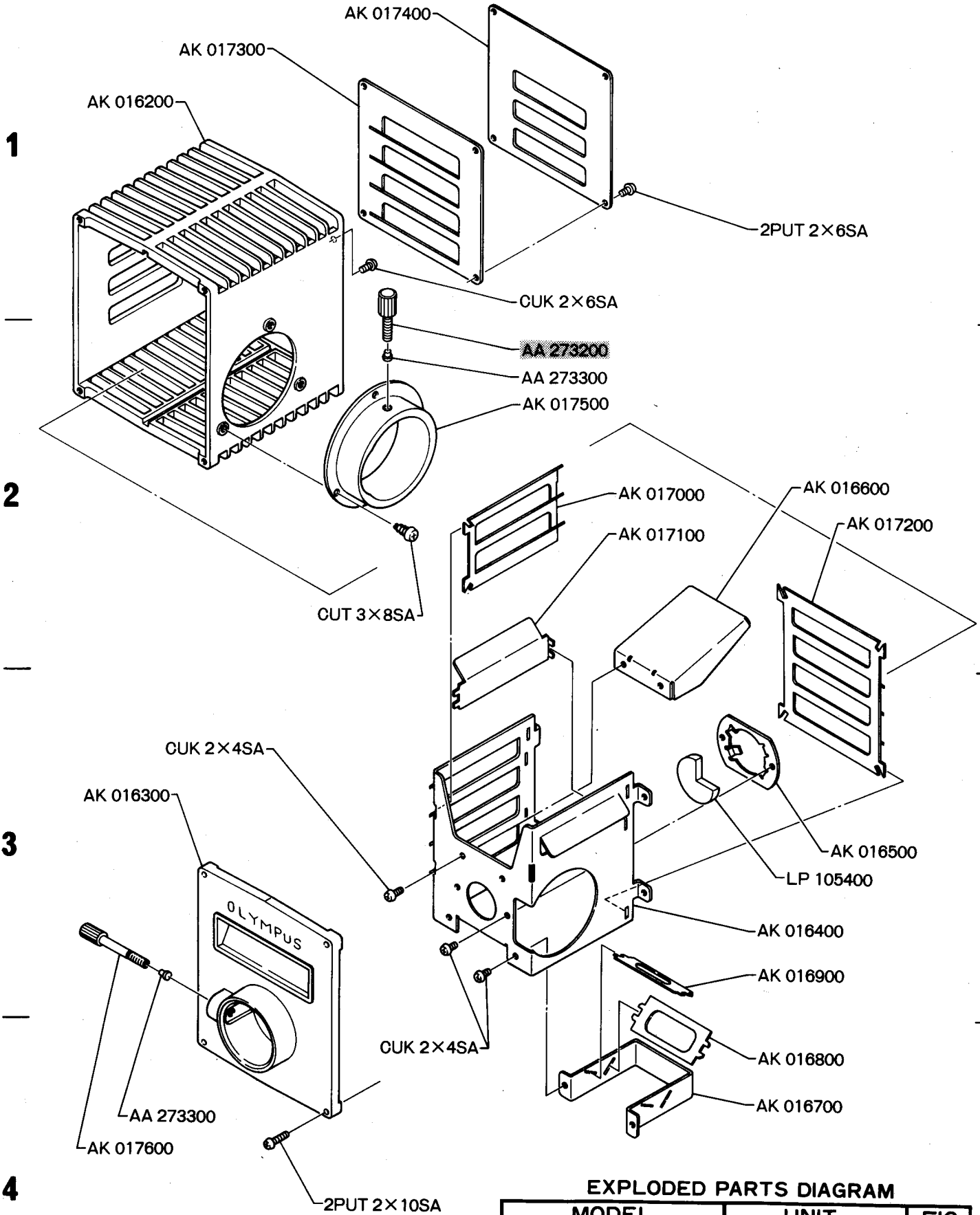
NOTE: WHEN ORDERING FOR SPARE PARTS, PLEASE CLARIFY A MODEL OR UNIT, PARTS NUMBER AND QUANTITY.

②

1468

| PARTS NO. | NAME OF PARTS | Q' ty | PARTS NO. | NAME OF PARTS | Q' ty | | |
|-------------------|------------------|---------------------------------|--------------|---------------|------------|--------|---|
| AA606100 | コードトメ | CORD HOLDER | 1 | WE114040 | CUK2X10SA | SCREW | 2 |
| AK007900 | フタ | COVER | 1 | 114137 | CUK3X3SA | SCREW | 1 |
| 008000 | ゼツエンイタ | INSULATOR PLATE | 1 | 114168 | CUK3X8SA | SCREW | 4 |
| 008100 | セッテン1 | CONTACT | 1 | 114096 | CUK3X10SA | SCREW | 2 |
| 008200 | セッテン2 | CONTACT | 1 | WE115308 | PUK2X6SA | SCREW | 3 |
| 008300 | レバー | LEVER | 2 | WE304014 | SW2SA | WASHER | 2 |
| 008400 | バネ1 | SPRING | 1 | 304020 | SW3SA | WASHER | 2 |
| 008500 | バネ2 | SPRING | 1 | WE601010 | NP1.6X10UO | PIN | 2 |
| 017800 | ウケ | LAMP HOLDER | 1 | 601091 | NP3X15UO | PIN | 2 |
| 017900 | ザ | MOUNT | 1 | WE307015 | ER3SA | E-RING | 2 |
| 018000 | ジク | SHAFT | 1 | | | | |
| 018100 | ツマミ | KNOB | 1 | | | | |
| DH007100 | タンシ | TERMINAL | 2 | | | | |
| 044400 | セッテピン | CONNECTING PIN | 2 | | | | |
| 044400 | タンシ | CONNECTING PIN (CLIMP TYPE) | 2 | | | | |
| 195000 | タンシ | CONNECTING PIN (SOLDER TYPE) | | | | | |
| DK076200 | プラグケース | CASING | 1 | | | | |
| 076300 | マルガタP | PLUG | 1 | | | | |
| DW017400 | コード | CORD | 1 | | | | |

A | **B** | **C** | **D**



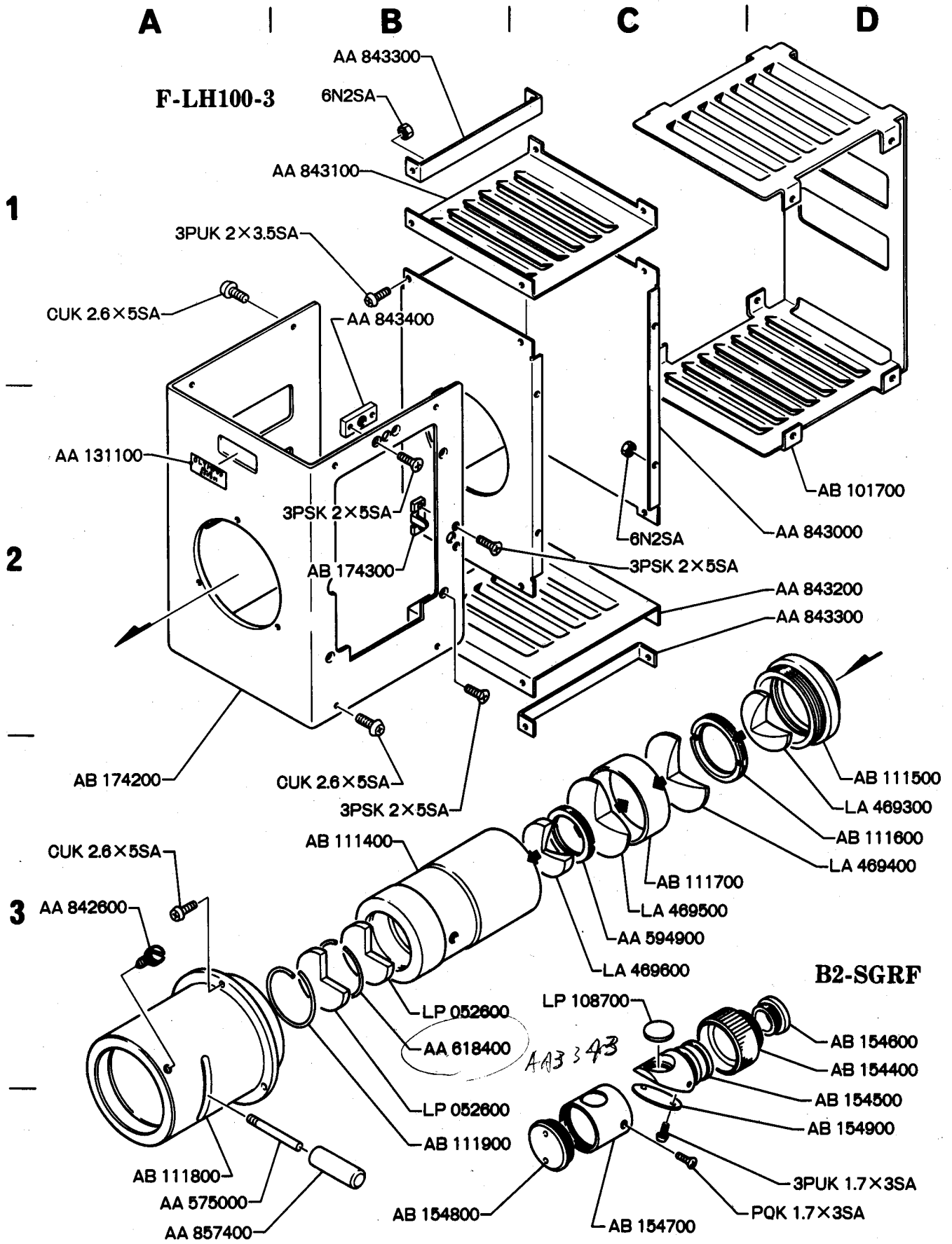
EXPLODED PARTS DIAGRAM

| MODEL | UNIT | FIG |
|-------|--------|-----|
| BH2 | B2-MLH | 46 |

OLYMPUS OPTICAL CO., LTD. TOKYO, JAPAN

NOTE: WHEN ORDERING FOR SPARE PARTS, PLEASE CLARIFY A MODEL OR UNIT, PARTS NUMBER AND QUANTITY.

| PARTS NO. | NAME OF PARTS | Q' ty | PARTS NO. | NAME OF PARTS | Q' ty |
|--------------|---------------|-------|-----------|-----------------|-------|
| AA273200 | ツマミ | | | KNOB | 1 |
| 273300 | ダボ | | | DOWEL | 2 |
| AK016200 | ホンタイ | | | BODY | 1 |
| 016300 | マエワク | | | FRONT FRAME | 1 |
| 016400 | ナカワク | | | INNER FRAME | 1 |
| 016500 | ロボソワク | | | GLASS FRAME | 1 |
| 016600 | シャコウバンU | | | LIGHT SEALED | 1 |
| 016700 | シャコウワク | | | LIGHT SEALED | 1 |
| 016800 | シャコウバンA | | | LIGHT SEALED | 1 |
| 016900 | シャコウバンC | | | LIGHT SEALED | 1 |
| 017000 | シャコウバンL | | | LIGHT SEALED | 1 |
| 017100 | イタ | | | PLATE | 1 |
| 017200 | シャコウバンR | | | LIGHT SEALED | 1 |
| 017300 | シャコウバンB | | | LIGHT SEALED | 1 |
| 017400 | メイハン | | | NAME PLATE | 1 |
| 017500 | ツツ | | | SOCKET MOUNT | 1 |
| 017600 | ツマミ | | | KNOB | 1 |
| LP105400 | ロボソガラス | | | ADIABAITC GLASS | 1 |
| CUK 2 X 4 SA | ビス | | | SCREW | 6 |
| CUT 3 X 8 SA | ビス | | | SCREW | 3 |
| 2PUT 2X 6 SA | ビス | | | SCREW | 4 |
| 2X10 SA | ビス | | | SCREW | 4 |



EXPLODED PARTS DIAGRAM

| MODEL | UNIT | FIG |
|-------|----------------------|-----|
| BH2 | F-LH100-3 B2-SGRF | 48 |

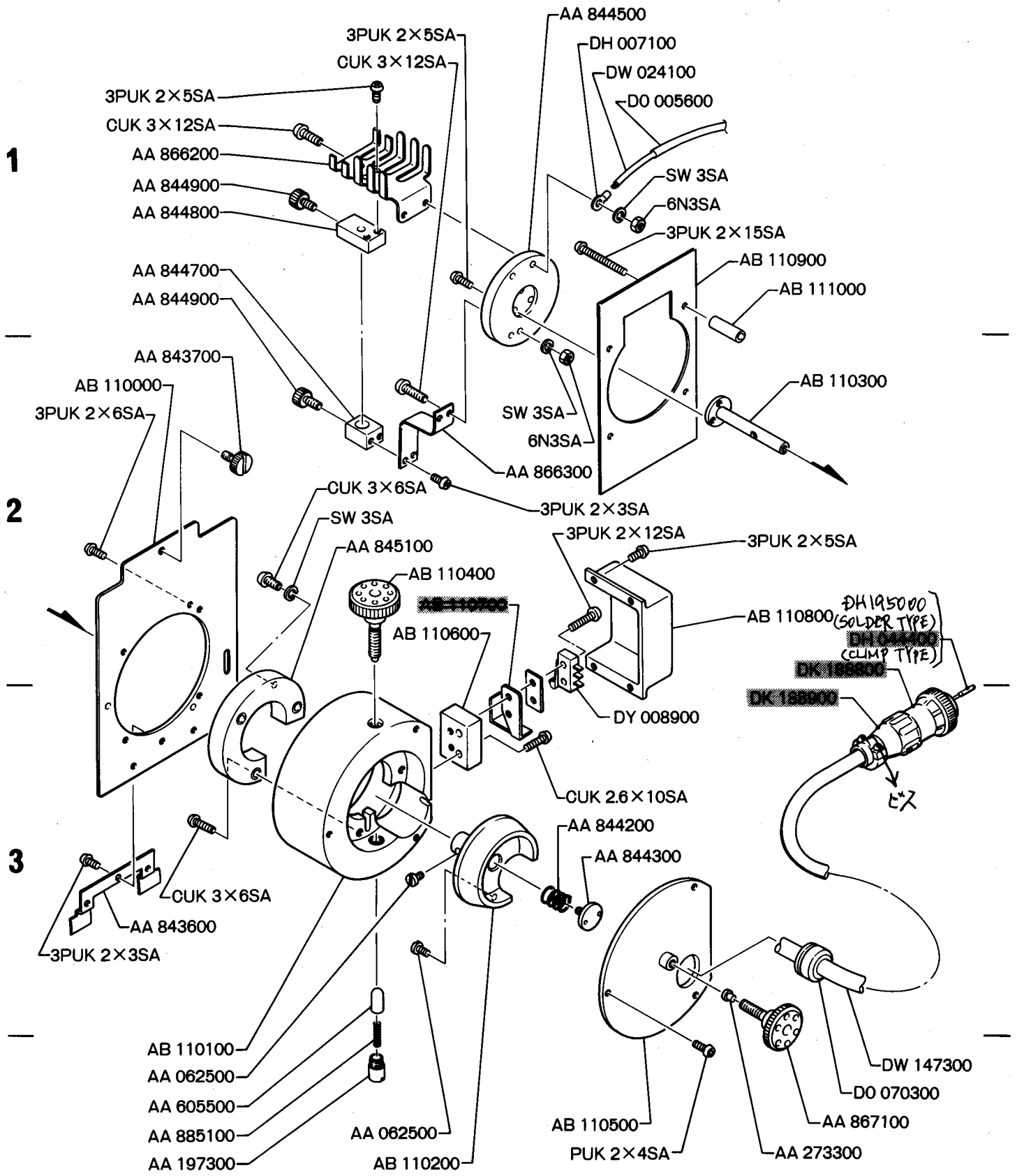
OLYMPUS OPTICAL CO., LTD. TOKYO, JAPAN

NOTE: WHEN ORDERING FOR SPARE PARTS, PLEASE CLARIFY A MODEL OR UNIT, PARTS NUMBER AND QUANTITY.

1570, 1572

| PARTS NO. | NAME OF PARTS | | Q' ty | PARTS NO. | NAME OF PARTS | | Q' ty |
|--------------------------|---------------|-------------------|-------|----------------------|---------------|--------------|-------|
| <u>F - L H 1 0 0 - 3</u> | | | | <u>B 2 - S G R F</u> | | | |
| AA131100 | メイバン | NAME PLATE | 1 | AB154400 | トリツケザ | KNURLED RING | 1 |
| 575000 | ツマミ | SHAFT | 1 | 154500 | ミラーザ | MIRROR MOUNT | 1 |
| 594900 | R | RING | 1 | 154600 | リング | RING | 1 |
| 618400 | スベーク | SPACER | 1 | 154700 | カバー | COVER | 1 |
| 842600 | ツマミ | KNOB | 2 | 154800 | フタ | CAP | 1 |
| 843000 | ナカハコ | INNER FRAME | 1 | 154900 | ミラー | MIRROR | 1 |
| 843100 | シャコウバン D | LIGHT SEALED | 1 | LP108700 | フィルタ | FILTER | 1 |
| 843200 | シャコウバン U | LIGHT SEALED | 1 | WE111023 | PQK1.7X3SA | SCREW | 2 |
| 843300 | イタ | PLATE | 4 | WE116068 | 3PUK1.7X3SA | SCREW | 2 |
| 843400 | ウケ | PLATE | 1 | | | | |
| 857400 | ツマミ | KNOB | 1 | | | | |
| AB101700 | アトイタ | REAR COVER PLATE | 1 | | | | |
| 111400 | レンズストウ | LENS TUBE | 1 | | | | |
| 111500 | W | LENS FRAME | 1 | | | | |
| 111600 | R | RING | 1 | | | | |
| 111700 | dp | SPACER | 1 | | | | |
| 111800 | スリーブ | SLEEVE | 1 | | | | |
| 111900 | C リング | RING | 1 | | | | |
| 174200 | マエイタ | FRONT COVER PLATE | 1 | | | | |
| 174300 | ロックイタ | LOCKING PLATE | 1 | | | | |
| LA469300 | レンズ | LENS | 1 | | | | |
| 469400 | レンズ | LENS | 1 | | | | |
| 469500 | レンズ | LENS | 1 | | | | |
| 469600 | レンズ | LENS | 1 | | | | |
| LP052600 | ロボンガラス | ADIABATIC GLASS | 2 | | | | |
| WE114020 | CUK2.6X5SA | SCREW | 11 | | | | |
| WE116088 | 3PUK2X3.5SA | SCREW | 8 | | | | |
| 116100 | 3PUK2X5SA | SCREW | 8 | | | | |
| WE501015 | 6N2SA | NUT | 12 | | | | |

A | **B** | **C** | **D**



EXPLODED PARTS DIAGRAM

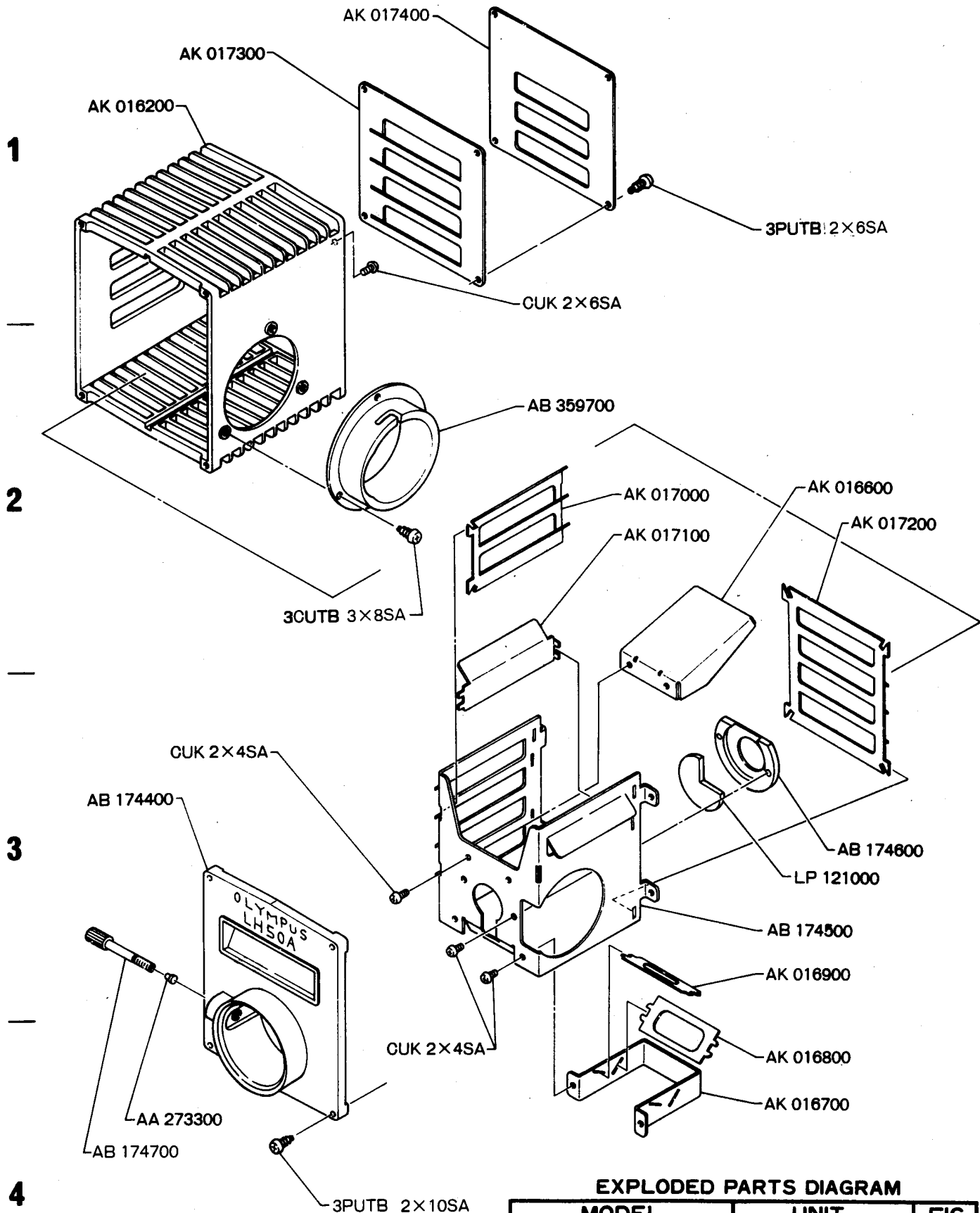
| MODEL | UNIT | FIG |
|-------|------------|-----|
| BH2 | F-LS100D-2 | 49 |

OLYMPUS OPTICAL CO., LTD. TOKYO, JAPAN

NOTE: WHEN ORDERING FOR SPARE PARTS, PLEASE CLARIFY A MODEL OR UNIT, PARTS NUMBER AND QUANTITY.

| PARTS NO. | NAME OF PARTS | | Q' ty | INDEX No. | PARTS No. | NAME OF PARTS | | Q' ty |
|-----------|---------------|-----------------|-------|-----------|---------------|---------------|-----------|-------|
| AA062500 | ビス | SCREW | 3 | J101 | DK188800 | コネクタ | CONNECTOR | 1 |
| 197300 | バネトウ | SPRING TUBE | 1 | | | | | |
| 273300 | ダボ | DOWEL | 1 | K101 | DW147300 | ケーブル | CORD | 2m |
| 605500 | バネジク | SPINDOLE | 1 | 102 | D0002800 | チューブ | TUBE | 0.06m |
| 843600 | カケガネ | HOOK | 1 | 103 | D0005600 | チューブ | TUBE | 0.4m |
| 843700 | ツマミ | KNOB | 1 | 104 | D0005600 | チューブ | TUBE | |
| 844200 | バネ | SPRING | 1 | 105 | DW024100 | コード | CORD | 0.4m |
| 844300 | カニメネジ | PIN FASE SCREW | 1 | 106 | DW024100 | コード | CORD | |
| 844500 | ゼツエンザ | INSULATOR PLATE | 1 | | | | | |
| 844700 | ウケD | LAMP HOLDER | 1 | SW101 | DY008900 | スイッチ | SWITCH | 1 |
| 844800 | ウケD | LAMP HOLDER | 1 | | | | | |
| 844900 | ツマミ | KNOB | 2 | W101 | DH044400 | タンシ | TERMINAL |] 5 |
| 845100 | ターミナル | SPACER | 1 | | (CLIMP TYPE) | | | |
| 866200 | アーム | RADIATING PLATE | 1 | 105 | DH195000 | タンシ | TERMINAL | |
| 866300 | タンシウケ | PLATE | 1 | | (SOLDER TYPE) | | | |
| 867100 | ツマミ | KNOB | 1 | 106 | DH007100 | タンシ | TERMINAL | 7 |
| 885100 | バネ | SPRING | 1 | | | | | |
| | | | | 112 | | | | |
| AB110000 | トリツケイタ | PLATE | 1 | X101 | DK188900 | ブラケット | BRACKET | 1 |
| 110100 | ワク | CENTERING MOUNT | 1 | 102 | D0070300 | ブッシュ | BUSHING | 1 |
| 110200 | ジクウケ | SHAFT HOLDER | 1 | | | | | |
| 110300 | ジク | SHAFT | 1 | | | | | |
| 110400 | ツマミ | KNOB | 1 | | | | | |
| 110500 | フタ | COVER | 1 | | | | | |
| 110600 | スペーサ | SPACER | 1 | | | | | |
| 110800 | カバー | COVER | 1 | | | | | |
| 110900 | シャコウバン | LIGHT SEALED | 1 | | | | | |
| 111000 | ボウザ | SPACER | 4 | | | | | |
| WE114012 | CUK2. 6X20SA | SCREW | 2 | | | | | |
| 114160 | CUK3X6SA | SCREW | 6 | | | | | |
| 114105 | CUK3X12SA | SCREW | 4 | | | | | |
| WE116091 | 3PUK2X3SA | SCREW | 5 | | | | | |
| 116100 | 3PUK2X5SA | SCREW | 12 | | | | | |
| 116105 | 3PUK2X6SA | SCREW | 3 | | | | | |
| 116174 | 3PUK2X15SA | SCREW | 4 | | | | | |
| WE304010 | SW2. 6SA | WASHER | 2 | | | | | |
| 304020 | SW3SA | WASHER | 7 | | | | | |
| WE501022 | 6N3SA | NUT | 4 | | | | | |

A | **B** | **C** | **D**



EXPLODED PARTS DIAGRAM

| MODEL | UNIT | FIG |
|-------|---------|-----|
| BH2 | LH50A-3 | 72 |

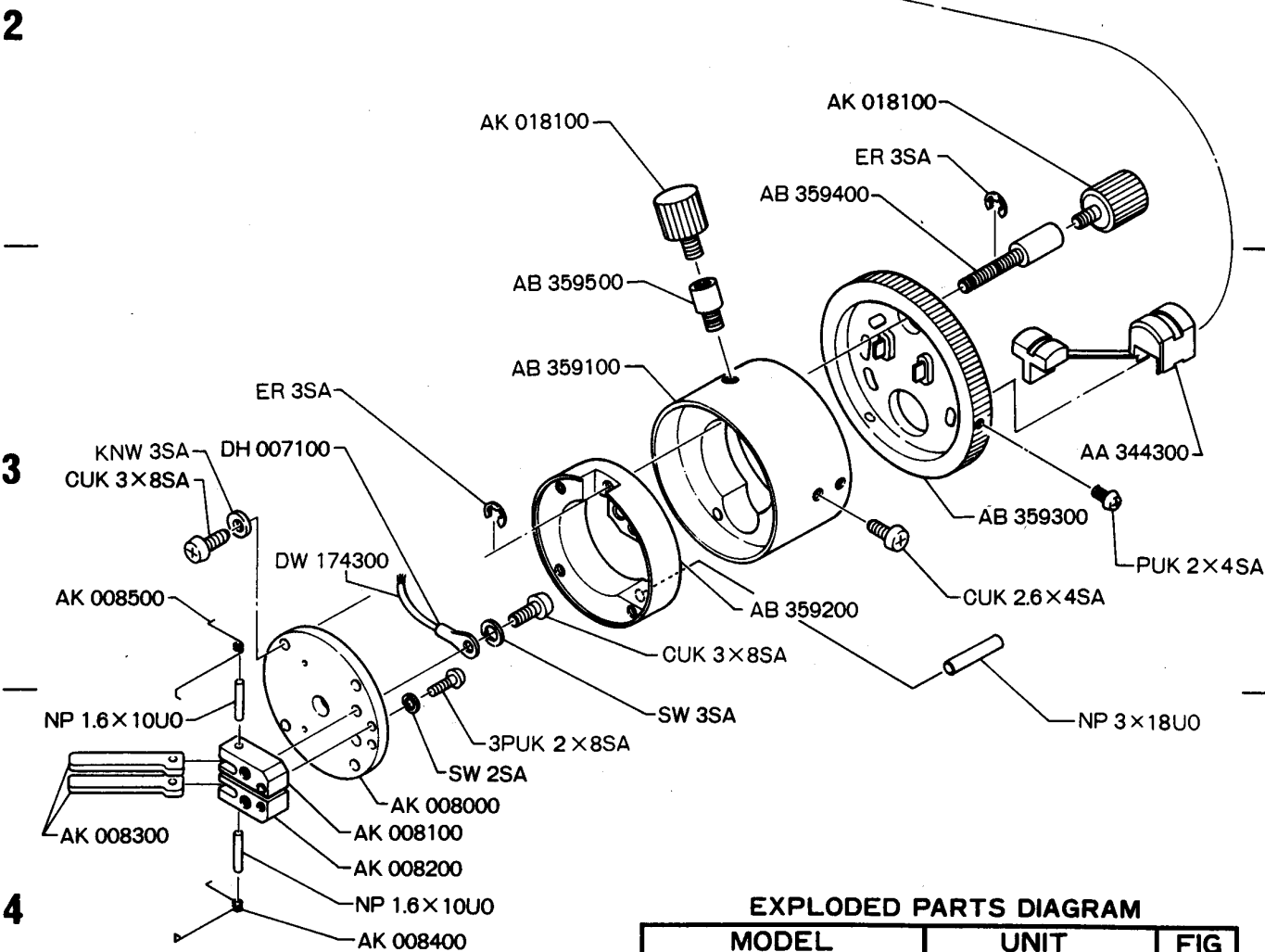
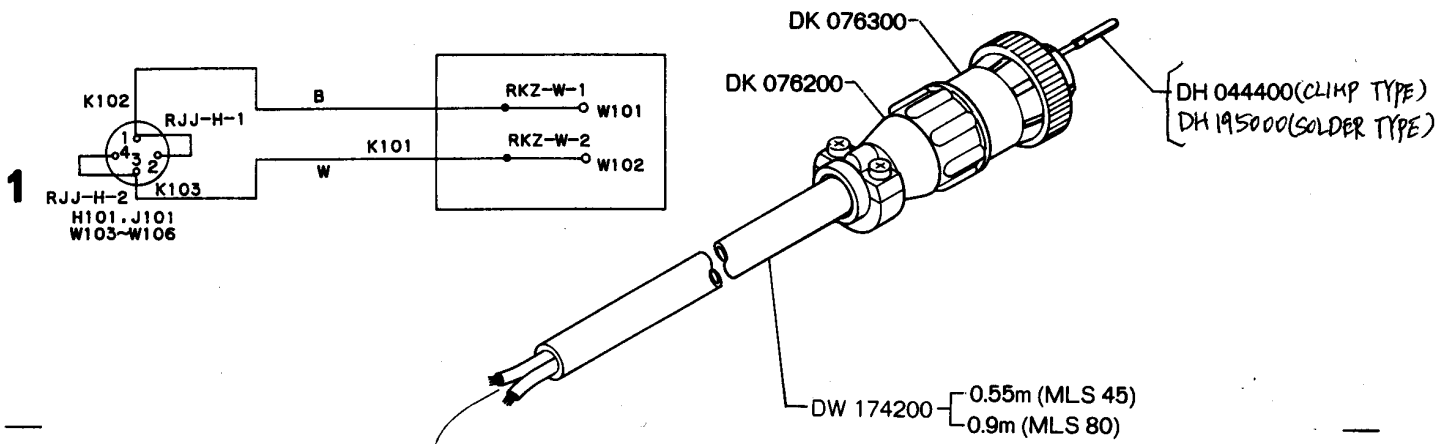
OLYMPUS OPTICAL CO., LTD. TOKYO, JAPAN

NOTE: WHEN ORDERING FOR SPARE PARTS, PLEASE CLARIFY A. MODEL OR UNIT, PARTS NUMBER AND QUANTITY.

AR 1113

| PARTS NO. | NAME OF PARTS | Q' ty | PARTS NO. | NAME OF PARTS | Q' ty |
|-----------|------------------------|-------|----------------|---------------|-------|
| AA273300 | ダボ DOWEL | 1 | CUK 2 x 4 SA | ビス SCREW | 10 |
| AB174400 | マエワク FRONT FRAME | 1 | 3CUTB 3 x 8 SA | ビス SCREW | 3 |
| 174500 | ナカワク INNER FRAME | 1 | 3PUTB 2 x 6 SA | ビス SCREW | 4 |
| 174600 | ロボンワク GLASS FRAME | 1 | 2 x10 SA | ビス SCREW | 4 |
| 174700 | ツマミ KNOB | 1 | | | |
| 359700 | ツツ SOCKET MOUNT | 1 | | | |
| AK016200 | ホントイ BODY | 1 | | | |
| 016600 | シャコウバン U LIGHT SEALED | 1 | | | |
| 016700 | シャコウワク LIGHT SEALED | 1 | | | |
| 016800 | シャコウバン A LIGHT SEALED | 1 | | | |
| 016900 | シャコウバン C LIGHT SEALED | 1 | | | |
| 017000 | シャコウバン L LIGHT SEALED | 1 | | | |
| 017100 | イタ PLATE | 1 | | | |
| 017200 | シャコウバン R LIGHT SEALED | 1 | | | |
| 017300 | シャコウバン B LIGHT SEALED | 1 | | | |
| 017400 | メイバン NAME PLATE | 1 | | | |
| LP121000 | ロボンガラス ADIABAITC GLASS | 1 | | | |

A | **B** | **C** | **D**



EXPLODED PARTS DIAGRAM

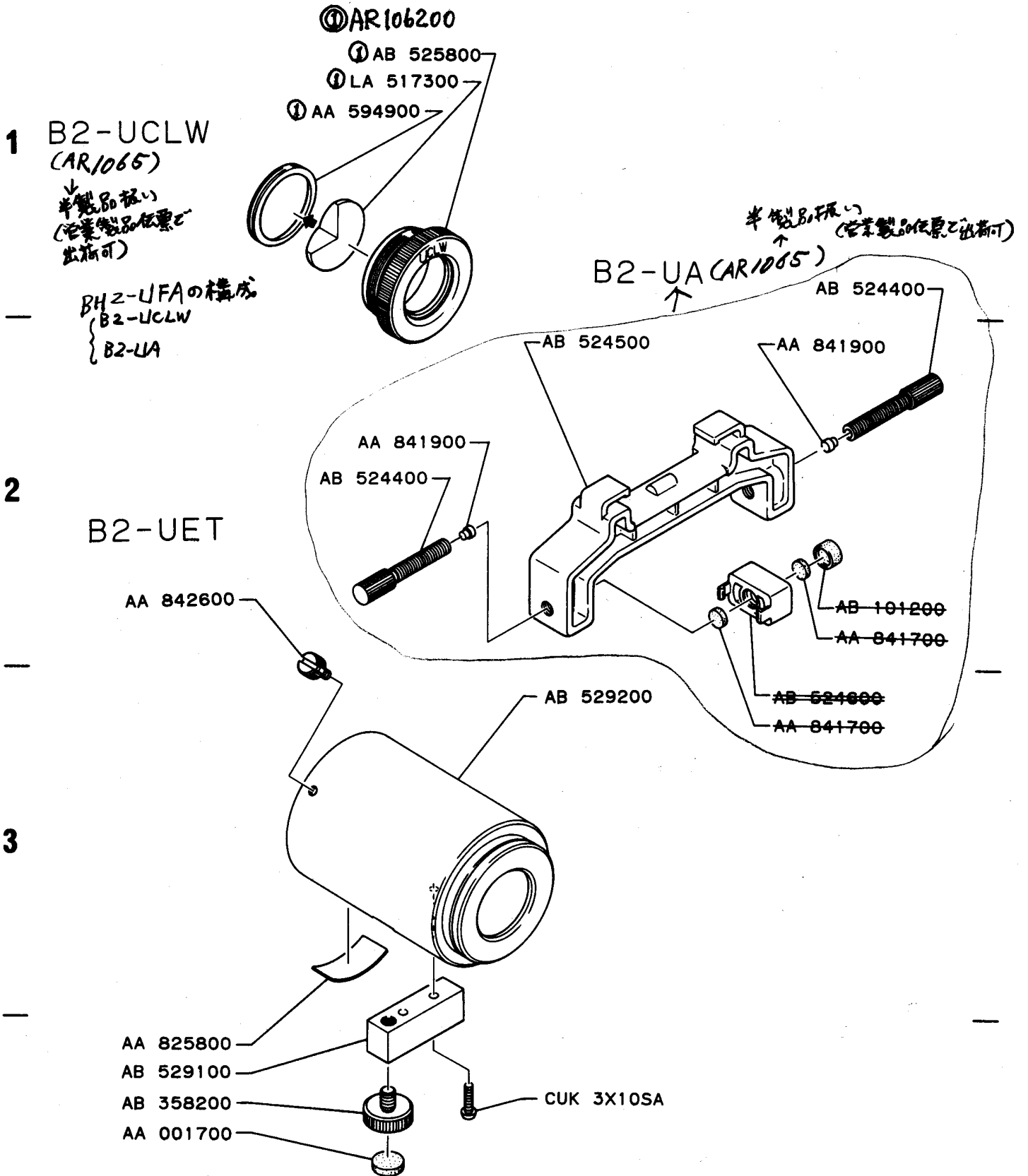
| MODEL | UNIT | FIG |
|-------|----------------------------------|-----|
| BH2 | B2-MLS30 B2-MLS45 B2-MLS80 | 74 |

OLYMPUS OPTICAL CO., LTD. TOKYO, JAPAN

NOTE: WHEN ORDERING FOR SPARE PARTS, PLEASE CLARIFY A MODEL OR UNIT, PARTS NUMBER AND QUANTITY.
1942.1944.R2007

| PARTS NO. | NAME OF PARTS | Q' ty | INDEX NO. | PARTS NO. | NAME OF PARTS | Q' ty |
|-----------|------------------------|-------|-----------|----------------|---------------|-------|
| AA344300 | ブッシング BUSHING | 1 | H 101 | DK076200 ケース | CASE | 1 |
| AB359100 | ウケ LAMP HOLDER | 1 | J 101 | DK076300 ハウジング | HOUSING | 1 |
| 359200 | ザ MOUNT | 1 | | | | |
| 359300 | フタ COVER | 1 | W 101 | DH007100 タンシ | TERMINAL | 2 |
| 359400 | ジク SHAFT | 1 | 102 | DH007100 タンシ | TERMINAL | |
| 359500 | ジク SHAFT | 1 | 103 | DH044400 タンシ | CONNECTING | |
| 359800 | メイバン NAME PLATE | 1 | | (CLIMP TYPE) | PIN | 4 |
| | | | 106 | DH195000 タンシ | CONNECTING | |
| AK008000 | ゼツエンイタ INSULATOR PLATE | 1 | | (SOLDER TYPE) | PIN | |
| 008100 | セッテン 1 CONTACT | 1 | K 101 | DW174200 ケーブル | CORD | 1 |
| 008200 | セッテン 2 CONTACT | 1 | 102 | D0002100 チューブ | TUBE | 0.12m |
| 008300 | レバー LEVER | 2 | 103 | D0002100 チューブ | TUBE | |
| 008400 | バネ 1 SPRING | 1 | | | | |
| 008500 | バネ 2 SPRING | 1 | | | | |
| 018100 | ツマミ KNOB | 2 | | | | |
| WE114016 | CUK2. 6X4SA SCREW | 1 | | | | |
| 114168 | CUK3X8SA SCREW | 6 | | | | |
| WE115290 | PUK2X4SA SCREW | 3 | | | | |
| WE116110 | 3PUK2X8SA SCREW | 2 | | | | |
| WE302024 | KNW3SA WASHER | 4 | | | | |
| WE304014 | SW2SA WASHER | 2 | | | | |
| 304020 | SW3SA WASHER | 6 | | | | |
| WE601010 | NP1. 6X10U0 PIN | 2 | | | | |
| 601076 | NP3X18U0 PIN | 1 | | | | |
| WE307015 | ER3SA E-RING | 2 | | | | |

A | B | C | D



EXPLODED PARTS DIAGRAM

| MODEL | UNIT | FIG |
|-------|----------------------------|-----|
| BH2 | B2-UCLW B2-UA B2-UET | 67 |

OLYMPUS OPTICAL CO., LTD. TOKYO, JAPAN

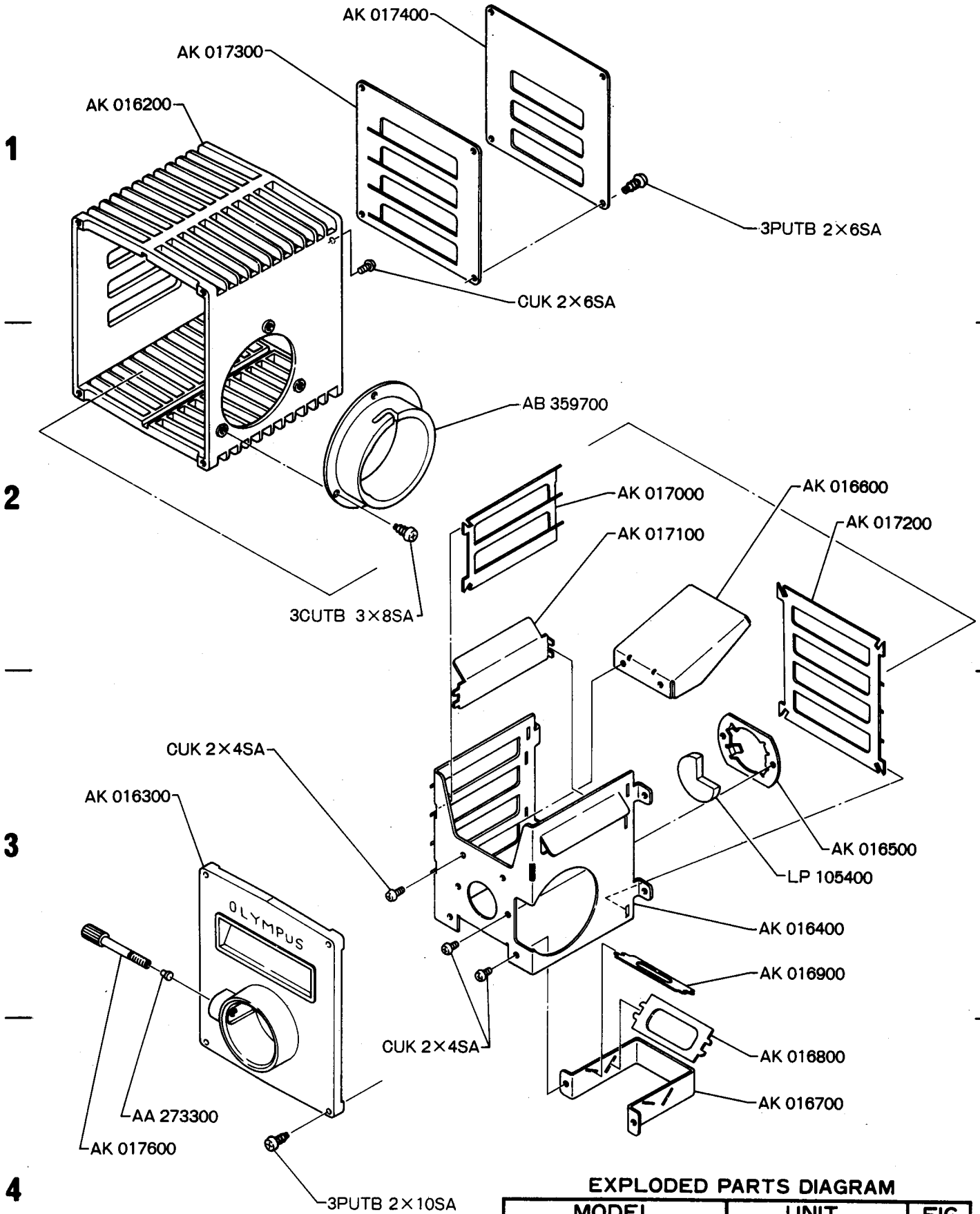
NOTE: WHEN ORDERING FOR SPARE PARTS, PLEASE CLARIFY A MODEL OR UNIT, PARTS NUMBER AND QUANTITY.

③

AR1062, AR1065, AR1077

| PARTS NO. | NAME OF PARTS | Q' ty | PARTS NO. | NAME OF PARTS | Q' ty |
|----------------------|-------------------------------------|-------|--------------------|-----------------|-------|
| <u>B 2 - U C L W</u> | | | <u>B 2 - U E T</u> | | |
| AA594900 | R RING | 1 | AA001700 | ザゴム RUBBUR FOOT | 1 |
| AB525800 | レンズワケ LENS FRAME | 1 | 825800 | メイハン NAME PLATE | 1 |
| AR106200 | コレクタ COLLECTOR LENS レンズクミ ASS' Y | 1 | 842600 | ツマミ KNOB | 2 |
| LA517300 | レンズ LENS | 1 | AB358200 | ネジ SCREW | 1 |
| | | | 529100 | カクザ MOUNT | 1 |
| | | | 529200 | チューブ TUBE | 1 |
| | | | WE114096 | CUK3X10SA SCREW | 2 |
| <u>B 2 - U A</u> | | | | | |
| AA841900 | ダボ DOWEL | 2 | | | |
| AB524400 | ツマミ KNOB | 2 | | | |
| 524500 | アーム ARM | 1 | | | |

A | **B** | **C** | **D**



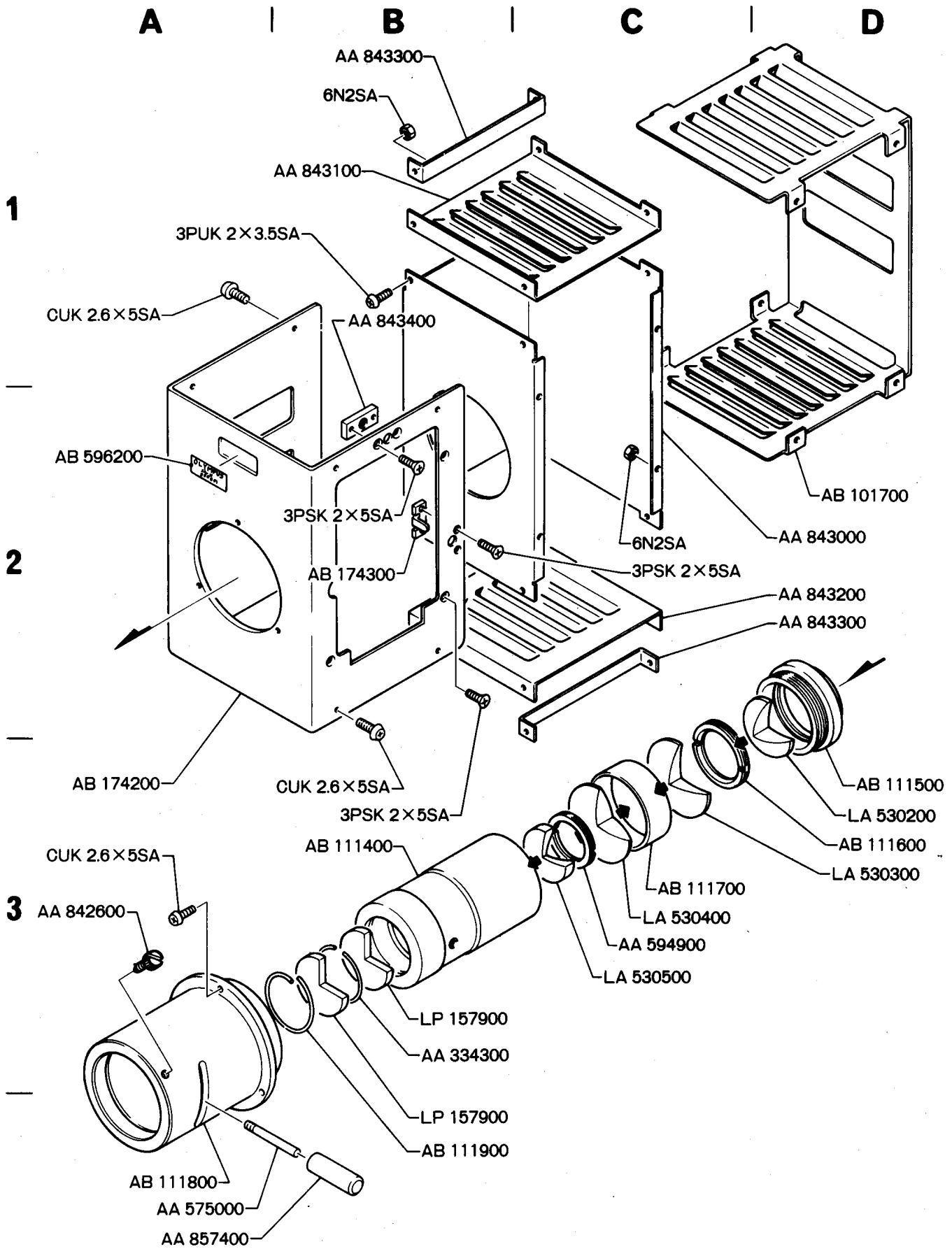
EXPLODED PARTS DIAGRAM

| MODEL | UNIT | FIG |
|-------|----------|-----|
| BH2 | B2-MLH-2 | 73 |

OLYMPUS OPTICAL CO., LTD. TOKYO, JAPAN

NOTE: WHEN ORDERING FOR SPARE PARTS, PLEASE CLARIFY A, MODEL OR UNIT, PARTS NUMBER AND QUANTITY.

| PARTS NO. | NAME OF PARTS | | Q' ty | PARTS NO. | NAME OF PARTS | | Q' ty |
|-----------|---------------|-----------------|-------|-----------|---------------|----------|-------|
| AA273300 | ダボ | DOWEL | 1 | CUK | 2 x 4 SA | ビス SCREW | 10 |
| AB359700 | ツツ | SOCKET MOUNT | 1 | 3CUTB | 3 x 8 SA | ビス SCREW | 3 |
| AK016200 | ホンタイ | BODY | 1 | 3PUTB | 2 x 6 SA | ビス SCREW | 4 |
| 016300 | マエワク | FRONT FRAME | 1 | | 2 x 10 SA | ビス SCREW | 4 |
| 016400 | ナカワク | INNER FRAME | 1 | | | | |
| 016500 | ロボンワク | GLASS FRAME | 1 | | | | |
| 016600 | シャコウバン U | LIGHT SEALED | 1 | | | | |
| 016700 | シャコウワグ | LIGHT SEALED | 1 | | | | |
| 016800 | シャコウバン A | LIGHT SEALED | 1 | | | | |
| 016900 | シャコウバン C | LIGHT SEALED | 1 | | | | |
| 017000 | シャコウバン L | LIGHT SEALED | 1 | | | | |
| 017100 | イタ | PLATE | 1 | | | | |
| 017200 | シャコウバン R | LIGHT SEALED | 1 | | | | |
| 017300 | シャコウバン B | LIGHT SEALED | 1 | | | | |
| 017400 | メイハン | NAME PLATE | 1 | | | | |
| 017600 | ツマミ | KNOB | 1 | | | | |
| LP105400 | ロボンガラス | ADIABAITC GLASS | 1 | | | | |



EXPLODED PARTS DIAGRAM

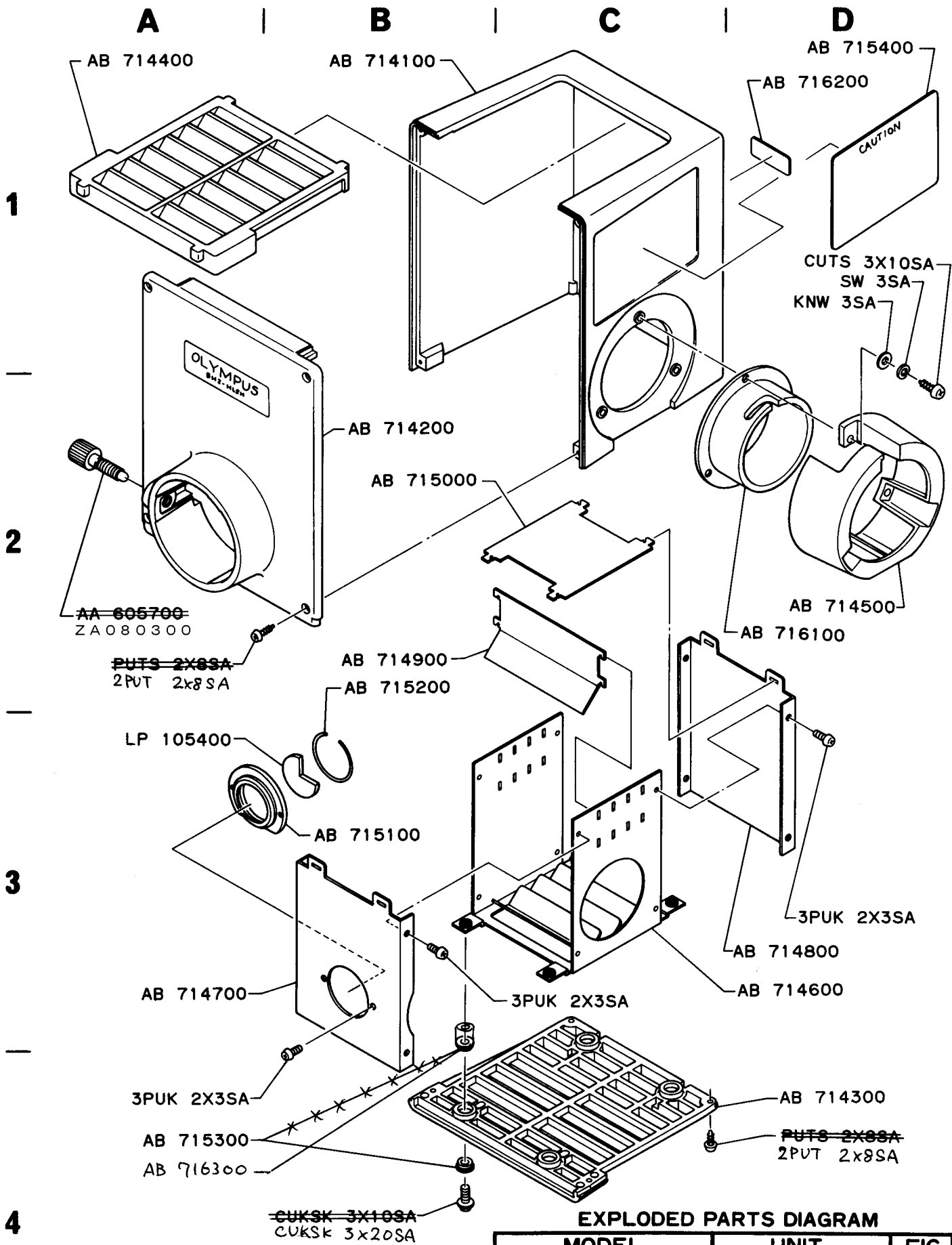
| MODEL | UNIT | FIG |
|-------|-----------|-----|
| BH2 | F-LH100-4 | 81 |

OLYMPUS OPTICAL CO., LTD. TOKYO, JAPAN

NOTE: WHEN ORDERING FOR SPARE PARTS, PLEASE CLARIFY A MODEL OR UNIT, PARTS NUMBER AND QUANTITY.

AR 1223

| PARTS NO. | NAME OF PARTS | Q' ty | PARTS NO. | NAME OF PARTS | Q' ty | | |
|-----------|---------------|-------------------|-----------|---------------|-------------|-------|----|
| AA334300 | リング | RING | 1 | WE114020 | CUK2.6X5SA | SCREW | 11 |
| 575000 | ツマミ | SHAFT | 1 | WE108023 | 3PSK2X5SA | SCREW | 8 |
| 594900 | R | RING | 1 | WE116088 | 3PUK2X3.5SA | SCREW | 8 |
| 842600 | ツマミ | KNOB | 2 | WE501015 | 6N2SA | NUT | 12 |
| 843000 | ナカハコ | INNER FRAME | 1 | | | | |
| 843100 | シャコウパン D | LIGHT SEALED | 1 | | | | |
| 843200 | シャコウパン U | LIGHT SEALED | 1 | | | | |
| 843300 | イタ | PLATE | 4 | | | | |
| 843400 | ウケ | PLATE | 1 | | | | |
| 857400 | ツマミ | KNOB | 1 | | | | |
| AB101700 | アトイタ | REAR COVER PLATE | 1 | | | | |
| 111400 | レンズトウ | LENS TUBE | 1 | | | | |
| 111500 | W | LENS FRAME | 1 | | | | |
| 111600 | R | RING | 1 | | | | |
| 111700 | dp | SPACER | 1 | | | | |
| 111800 | スリーブ | SLEEVE | 1 | | | | |
| 111900 | C リング | RING | 1 | | | | |
| 174200 | マエイタ | FRONT COVER PLATE | 1 | | | | |
| 174300 | ロックイタ | LOCKING PLATE | 1 | | | | |
| 596200 | メイバン | NAME PLATE | 1 | | | | |
| LA530200 | レンズ | LENS | 1 | | | | |
| 530300 | レンズ | LENS | 1 | | | | |
| 530400 | レンズ | LENS | 1 | | | | |
| 530500 | レンズ | LENS | 1 | | | | |
| LP157900 | ロボンガラス | ADIABATIC GLASS | 2 | | | | |



EXPLODED PARTS DIAGRAM

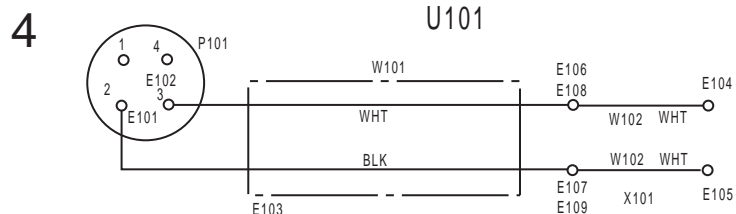
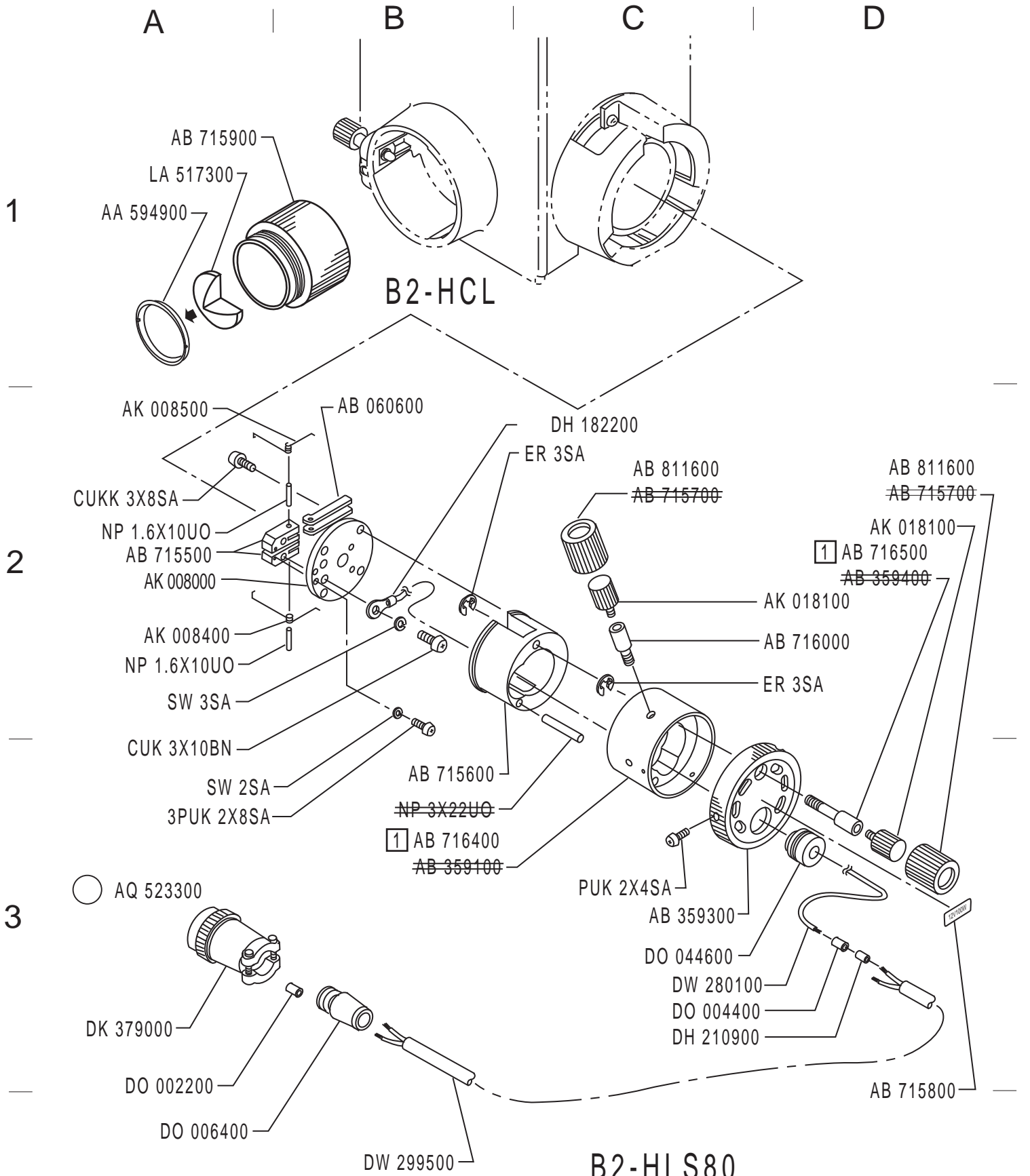
| MODEL | UNIT | FIG |
|-------|--------|-----|
| BH2 | LH100A | 82 |

OLYMPUS OPTICAL CO., LTD. TOKYO, JAPAN

NOTE: WHEN ORDERING FOR SPARE PARTS, PLEASE CLARIFY
② A MODEL OR UNIT, PARTS NUMBER AND QUANTITY.

AR1401

| PARTS NO. | NAME OF PARTS | | Q' ty | PARTS NO. | NAME OF PARTS | | Q' ty |
|-------------------------|---------------|------------------|--------------|-----------|---------------|--|-------|
| AA605700 | ツク | KNOB | 1 | | | | |
| ZA080300 | ツク | KNOB | 1 | | | | |
| AB714100 | ホントイ | BODY | 1 | | | | |
| 714200 | マエワク | FRONT FRAME | 1 | | | | |
| 714300 | ソコイタ | BOTTOM COVER | 1 | | | | |
| 714400 | カザリイタ | TOP COVER | 1 | | | | |
| 714500 | カバー | COVER | 1 | | | | |
| 714600 | ナカワク1 | INSIDE FRAME 1 | 1 | | | | |
| 714700 | ナカワク2 | INSIDE FRAME 2 | 1 | | | | |
| 714800 | ナカワク3 | INSIDE FRAME 3 | 1 | | | | |
| 714900 | シャコウバン1 | LIGHT SEALED 1 | 4 | | | | |
| 715000 | シャコウバン2 | LIGHT SEALED 2 | 1 | | | | |
| 715100 | ロボンワク | GLASS FRAME | 1 | | | | |
| 715200 | バネ | SPRING | 1 | | | | |
| 715300 | スベ-サ | SPACER | 4 | | | | |
| 715400 | メイハン | CAUTION PLATE | 1 | | | | |
| 716100 | ツツ | TUBE | 1 | | | | |
| 716200 | メカクシ | COVER | 1 | | | | |
| 716300 | タニネ-ンSP | SPACER | 4 | | | | |
| LP105400 | ロボンガラス | ADIABATIC GLASS | 1 | | | | |
| CVKSK3x10 SA | ビス | SCREW | 4 | | | | |
| CVKSK3x20 SA | ビス | SCREW | 4 | | | | |
| CUTS3 x10 SA | ビス | SCREW | 3 | | | | |
| PVTS2 x 8 SA | ビス | SCREW | 8 | | | | |
| 2PVT 2 x 8 SA | ビス | SCREW | 8 | | | | |
| 3PUK 2x 3 SA | ビス | SCREW | 10 | | | | |
| KNW 3 SA | ワッシャ | WASHER | 3 | | | | |
| SW 3 SA | ワッシャ | WASHER | 3 | | | | |



EXPLODED PARTS DIAGRAM

| MODEL | UNIT | FIG |
|-------|--------------------|-----|
| BH2 | B2-HCL B2-HLS80 | 83 |

OLYMPUS OPTICAL CO., LTD. TOKYO, JAPAN

NOTE: WHEN ORDERING FOR SPARE PARTS, PLEASE CLARIFY
A MODEL OR UNIT, PARTS NUMBER AND QUANTITY.

AR1403, AR1402

| PARTS No. | NAME OF PARTS | Q'ty | INDEX No. | PARTS No. | NAME OF PARTS | Q'ty |
|---------------------|------------------|----------------|--------------|--------------------|---------------|---------------|
| <u>B2-HCL</u> | | | | <u>B2-HLS80-EL</u> | | |
| AA594900 | リング | RING | 1 | P101 | DK379000 | CONNECTOR 1 |
| AB715900 | レンズワ | LENS FRAME | 1 | W101 | DW299500 | CABLE 1 |
| LA517300 | レンズ | LENS | 1 | W102 | DW280100 | CABLE 2 |
| | | | | E101/102 | D0002200 | TUBE 2 |
| | | | | E103 | D0006400 | BUSH 1 |
| | | | | E104/105 | DH182200 | TERMINAL 2 |
| | | | | E106/107 | DH210900 | TERMINAL 2 |
| | | | | E108/109 | D0004400 | TUBE 2 |
| <u>B2-HLS80</u> | | | | | | |
| AK008000 | ゼツインイタ | INSULATOR PLAT | 1 | U101 | AQ523300 | CABLE ASS'Y 1 |
| AK008400 | ハネ | SPRING | 1 | X101 | D0044600 | BUSH 1 |
| AK008500 | ハネ | SPRING | 1 | | | |
| AK018100 | ツミ | KNOB | 2 | | | |
| AB060600 | レバ | LEVER | 2 | | | |
| AB716400 | | | | | | |
| AB359100 | ウケ | HOLDER | 1 | | | |
| AB359300 | フタ | COVER | 1 | | | |
| AB716500 | | | | | | |
| AB359400 | シク | SHAFT | 1 | | | |
| AB715500 | セッテン | CONTACT | 2 | | | |
| AB715600 | ザ | MOUNT | 1 | | | |
| AB811600 | | | | | | |
| AB715700 | キャップ | CAP | 2 | | | |
| AB715800 | メイハン | NAME PLATE | 1 | | | |
| AB716000 | シク | SHAFT | 1 | | | |
| CUKK3X8SA | ビス | SCREW | 4 | | | |
| CUK3X10BN | ビス | SCREW | 2 | | | |
| PUK2X4SA | ビス | SCREW | 3 | | | |
| 3PUK2X8SA | ビス | SCREW | 2 | | | |
| SW2SA | ワッシャ | WASHER | 2 | | | |
| SW3SA | ワッシャ | WASHER | 2 | | | |
| ER3SA | Eリング | E-RING | 2 | | | |
| NP1.6X10UO | ノックピン | PIN | 2 | | | |
| NP3X22UO | ノックピン | PIN | 1 | | | |