

OLYMPUS®

AUTOMATIC
PHOTOGRAPHY SYSTEM

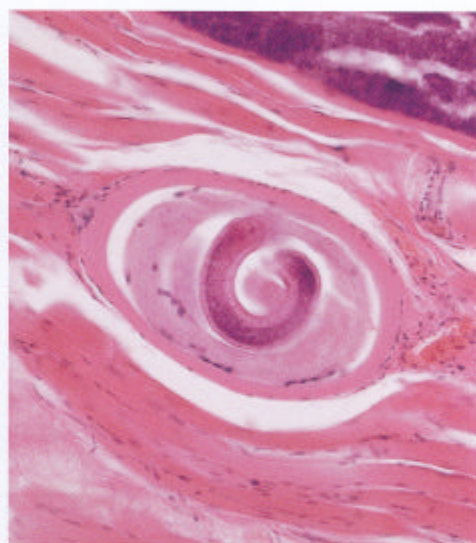
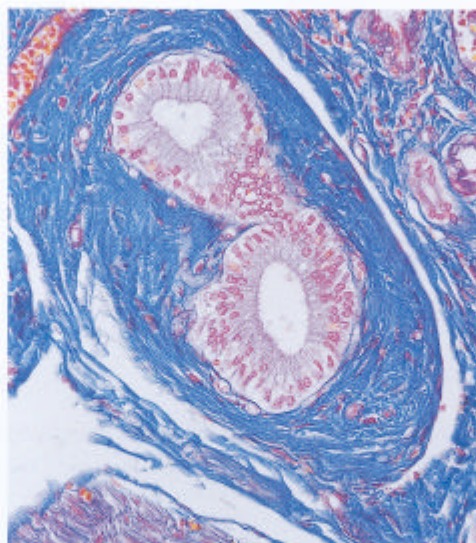
PM-10AK3

Olympus is about life. About photographic innovations that capture precious moments of life. About advanced medical technology that saves lives. About information- and industry-related products that make possible a better living. About adding to the richness and quality of life for everyone. Olympus. Quality products with a **FOCUS ON LIFE**

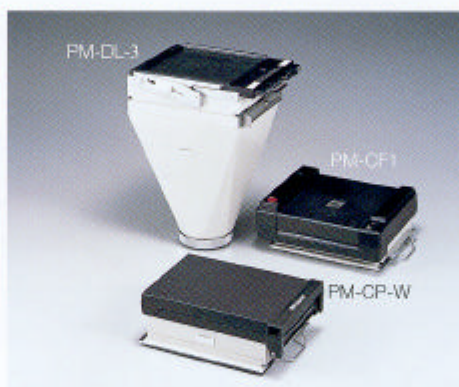
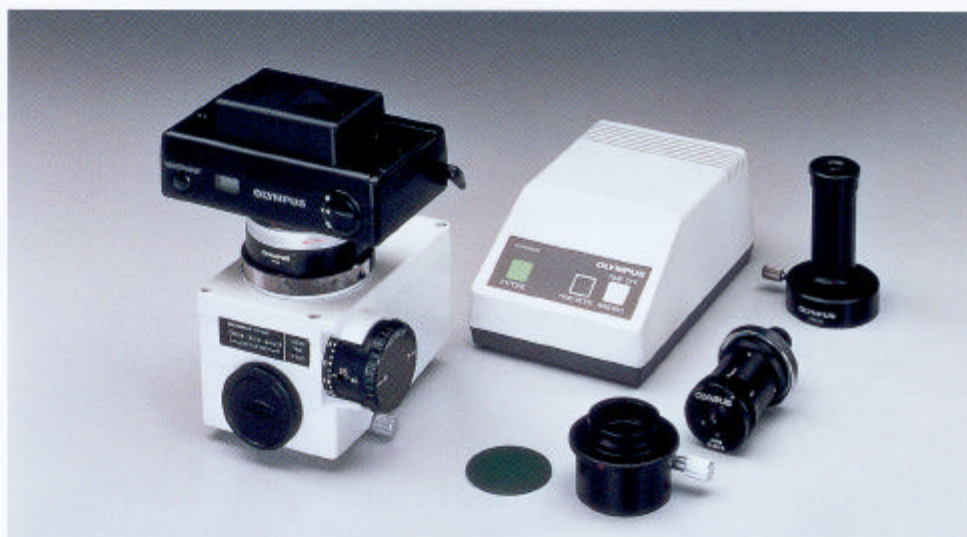


A Simple, Economical Approach to Automatic

The PM-10AK3 makes high-quality photography affordable and easy with a range of high-performance features and one-touch button control. A highly precise automatic exposure photomicrography camera, the PM-10AK3 displays estimated exposure time in 4-step increments, offers single-dial operation for the factor settings of different camera formats and employs a separate compact control unit for vibration-free operation. Compact and lightweight, the PM-10AK3 delivers superb photomicrographs for multi-format documentation with ease.

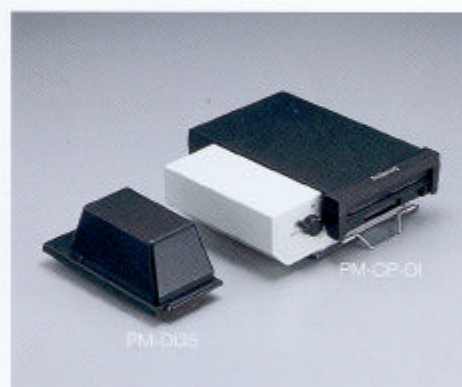


PM-10AK3



A wide selection of cameras

Various attachments are provided to accept a 35mm camera with auto film advance, large-format camera, as well as 3-1/4" X 4-1/4" Polaroid camera.



Data imprinting capability

Two separate data imprinters are available: one for a 35mm camera and the other for Polaroid cameras. Up to eight alphanumeric characters and symbols including date, time, temperature, operator name and photographic data can be imprinted on the film plane.

*Control unit (PM-CBD1) and AC adapter (U-ACAD-2) are required.

Photomicrography



Single-dial operation

Single-dial operation permits factor settings for different camera formats (35mm or large-format) and adjustment of film speed (ISO 50-50,000 for large-format). Also permits exposure adjustment by changing effective film speed, from 0.5× to 4× of the nominal value, in 1/3 increments.



Exposure time in 4-step increments

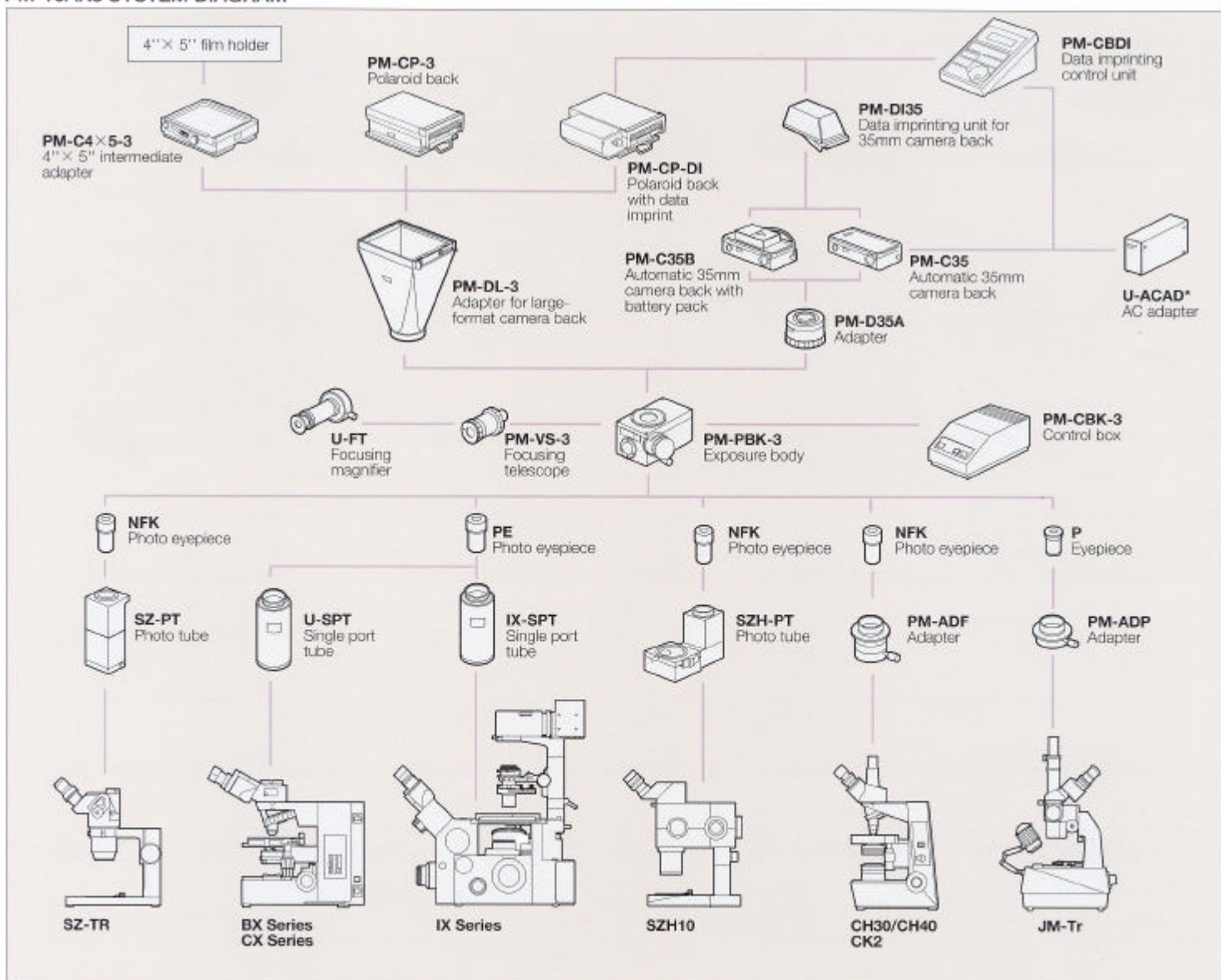
Estimated exposure time is indicated in 4-step increments: under 1/10 sec., 1/10-1 sec., 1-10 sec., and over 10 seconds. This is essential to anticipate the film's reciprocity failure effect. Over- or under-exposure warning is provided by flashing-red LEDs. LED display for end of film and shutter operation mode.



A separate, compact control unit.

Simple, one-touch button control activates the camera shutter automatically for vibration-free operation. Manual exposure is also controlled from this unit.

PM-10AK3 SYSTEM DIAGRAM

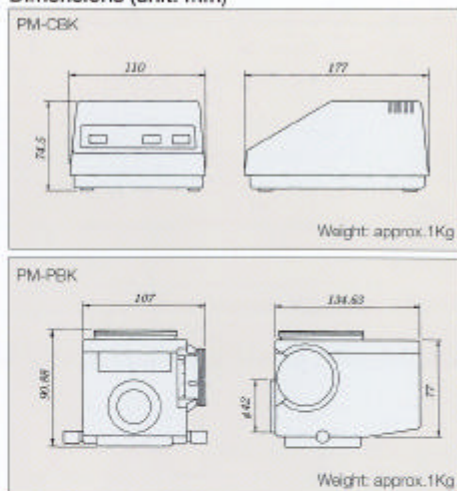


*Requires when used PM-CBD1 and PM-C35

PM-10AK3 Specifications

Automatic exposure control unit	Measuring system	Real time (TTL)
	Exposure mode	Auto mode, Time mode
	Auto exposure adjustment range	1/125 sec. - 4 min. (Auto mode, ISO100)
	Measuring area	30% center average measurement
Acceptable cameras	35mm cameras (PM-C35: requires AC adapter U-ACAD and PM-C35B: requires two CR 123 batteries), 3-1/4" x 4-1/4" Polaroid camera, 4" x 5" sheet film	
Control unit	Data input via dial, manual ISO setting, estimated exposure time is indicated in 4-step LED	
Data imprint	Possible by mounting the Data Imprint Unit (PM-DI35). However, as the PM-C35B back cover (battery compartment) is detached, the AC adapter (U-ACAD) is required. Up to eight alphanumeric characters and symbols can be imprinted on the film plane.	
Light distribution	To the focusing telescope, exposure regulator (photocell) and camera back (film plane)=20:16:64%	

Dimensions (unit: mm)



PM-10M3/Manual photomicrographic system

The compact, easy-to-use PM-10M3 employs a shutter with unique rubber cushion to prevent vibration transmission. Exposure and color temperature measurement are easy and accurate with the EMM-7* photographic exposure meter attached. *Sales restricted in some areas

PM-10M3 Specifications

Exposure mode	Manual
Shutter speed	1/250, 1/125, 1/60, 1/30, 1/15, 1/8, 1/4, 1/2, 1 sec. B
Acceptable cameras	35mm camera, 4" x 5" sheet film, 3-1/4" x 4-1/4" Polaroid camera (Recordata back can be mounted on 35 mm camera back)



SC-35/35mm SLR camera

The SC-35 is an SLR camera dedicated for microscopic applications, allowing a cost-effective 35mm photomicrography system to be configured. This camera can be mounted on a zoom stereo microscope or student microscope using an adapter. The SC-35 features auto loading, auto winding, auto rewinding, automatic exposure and exposure correction.

*Exclusive OM mount adapter required.

SC-35 Specifications

Measurement system	TTL direct measurement system
Exposure mode	Aperture-priority exposure, manual
Shutter speed	1/2000-2 sec.

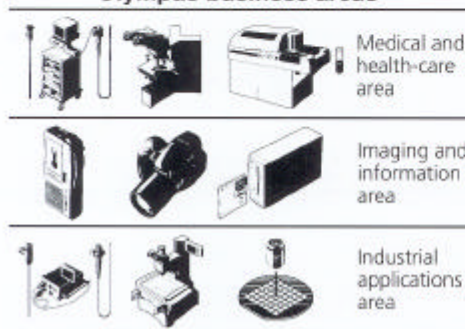


© "Polaroid" is a trademark registered by the Polaroid Corporation, Cambridge, Mass, U.S.A.

Specifications are subject to change without any obligation on the part of the manufacturer.



Olympus business areas



OLYMPUS®

FOCUS ON LIFE

OLYMPUS OPTICAL CO., LTD.
2-43-2 Hatahara, Shinjuku-ku, Tokyo, Japan
OLYMPUS OPTICAL CO. (EUROPA) GMBH.
Postfach 10 49 09, 20134, Hamburg, Germany
OLYMPUS AMERICA INC.
2 Corporate Center Drive, Melville, NY 11747-8157, U.S.A.
OLYMPUS SINGAPORE PTE LTD.
BLR 211 Henderson Road #13-03, Henderson Industrial Park, Singapore 106902, Singapore
OLYMPUS OPTICAL CO. (UK) LTD.
2-5 Hondurua Street, London EC1Y 0TX, United Kingdom.